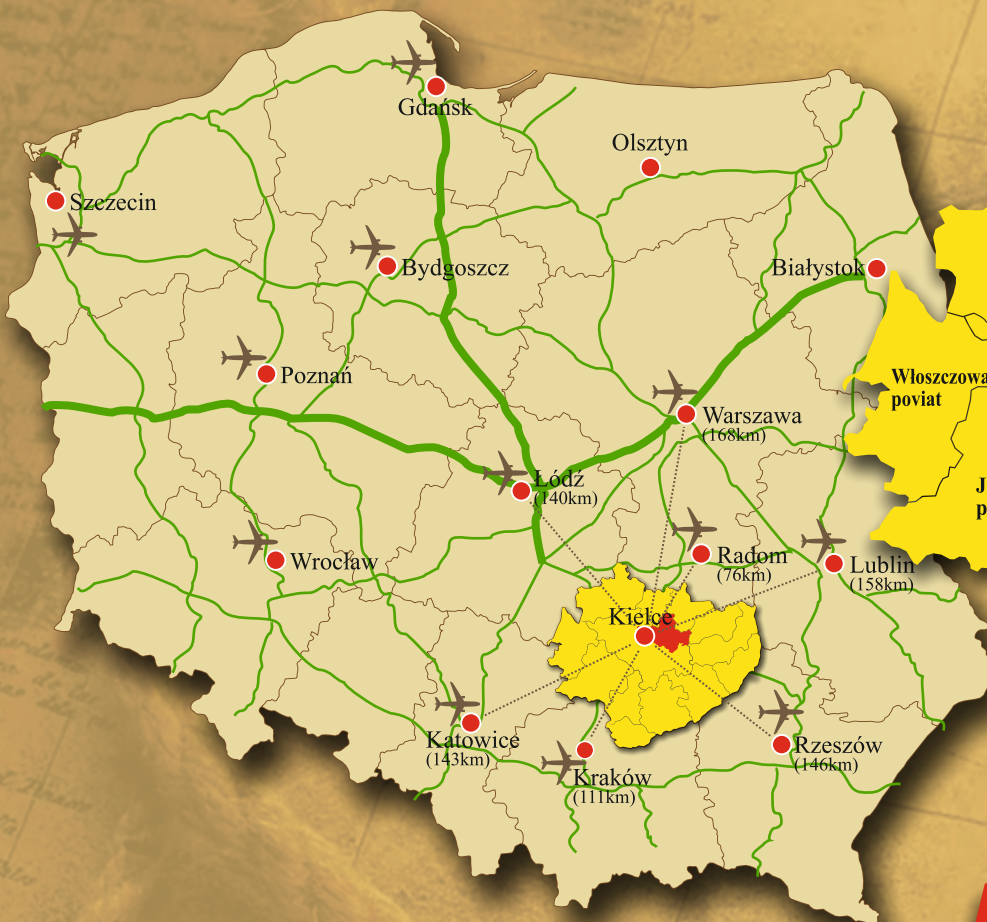


The legendary Świętokrzyskie Mountains



English



THE LEGENDARY ŚWIĘTOKRZYSKIE MOUNTAINS



Gołoborze

The Świętokrzyskie Mountains, some of the oldest mountains in Europe, are situated in the central part of Poland, making them an ideal destination for a short getaway. The location of the region around the largest ranges, the Łysogóry range with the highest peaks of the Świętokrzyskie Mountains, Łysica at 614 m a.s.l. and Łysa Góra (also known as Łysiec or Święty Krzyż - 595 m a.s.l.), its good transportation links, excellent base of accommodation and restaurant options, and numerous tourist attractions all create the ideal conditions to spend leisure time in an interesting and active way. The Świętokrzyskie Mountains are an area rich in natural beauty and cultural heritage, and

the labour of generations of its inhabitants has made it the pearl of the Świętokrzyski region. Right in the heart of the mountains is the oldest Polish sanctuary, the Holy Cross Monastery, which boasts relics of the True Cross (wood from the Holy Cross) and attracts thousands of pilgrims and tourists annually. The natural wonders of the ancient fir forests and the characteristic gołoborze stone runs, which according to locals are the site of infamous witches' sabbaths, have made the region famous worldwide. The exceptional geological structure and rich history of the area simply add to the attractiveness of the legendary Świętokrzyskie Mountains.

ACTIVE TOURISM
- ACTIVITY IN NATURE



The Świętokrzyskie Mountains are the perfect place for active recreation in the great outdoors. The region boasts a wealth of cultural, educational and scenic riches, with the fascinating and unusual geological structure and the diverse flora and fauna enchanting visitors.

An additional attraction is provided by the man-made reservoirs in Cedzyn and Wilków, with sandy beaches surrounded by pine forests, outdoor fitness areas, and

kayak and water bike rental facilities. These are also an excellent place for active recreation for fans of sailing and fishing. Approximately 320 kilometres of hiking, educational and cycling trails crisscross the Świętokrzyskie Mountains. There are also numerous ski slopes, and thrill-seekers can make use of the light sport aircraft, glider and skydiving facilities offered at the airfield in Masłów by Kielce Aeroclub.

CULTURAL TOURISM - SPIRITUALITY AND TRADITION

The Świętokrzyskie Mountains are a “power point”, an area with exceptional traditions and intangible culture. The most mysterious place in the region is Łysiec, also known as Łysa Góra or Święty Krzyż. Łysiec is believed to have been the site of a pagan cult which was active here for many centuries before the arrival of the Christian religion.

The darkness of the fir forests and the impressive rock fields known by locals as gołoborze are the source of many legends and stories about the cyclopes, bandits and witches of Łysa Góra. Starting around the beginning of the first millennium and continuing for nearly 600 years, one of the largest ancient foundry centres operated in the area. It is believed that the stone religious cult wall which was constructed at the summit of Łysiec, most likely of a sacral nature, dates from this period. On this legend-enshrouded peak, one of the first centres cultivating the Christian faith in Poland was established. The church and monastery of the Benedictine fathers founded here at the beginning of the 12th century soon became the most important and oldest sanctuary in Poland, with the relics of the True Cross which were donated to the church by the Polish king, Władysław Łokietek, drawing large crowds of pilgrims and penitents.



Cultural and Archaeological Centre, Nowa Słupia

In the area of the Łysogóry range, the highest range in the Świętokrzyskie Mountains, there are many traces of ancient human activity. Nowa Słupia, at the foot of Łysa Góra, boasts the Stone Pilgrim, the figure of a kneeling man, and there is also the Museum of Ancient Metallurgy, the Cultural and Archaeological Centre, Bodzentyn with its ruins of the Former Palace of Kraków Bishops, the historic farm of the Czernikiewicz family, the Church of St. Stanisław, and Święta Katarzyna, which is home to a convent of Bernardine nuns. In addition, there is the Museum of Minerals and Fossils, Ciekoty, where Stefan Żeromski's manor house is located, Bieliny and also Huta Szklana with its Medieval Settlement and the restaurant Karczma Izba Dobrego Smaku.

The special atmosphere of the Świętokrzyskie Mountains can be felt in many of the special events which are organised in the region. One of the most well-known of these is the legendary Dymarki Świętokrzyskie Archaeological Festival, held every year since 1967, which popularises the history of iron-smelting and metallurgy in the Świętokrzyskie Mountains. The cultural landscape of the Świętokrzyskie Mountains area also includes events such as the Świętokrzyski Fair, the Świętokrzyski Rustic Soup Festival, the Strawberry Festival, Bodzentyn Days, the Świętokrzyski Pilgrimage Rally and the Świętokrzyski Festival of Folk Culture.

The Łysogóry range



HEALTH-ORIENTED TOURISM - HEALTH FROM NATURE

The Świętokrzyski region doesn't just mean tradition and history, but also health and relaxation. The forests of the Świętokrzyski National Park are a great way to experience deep calm, and to listen to the quiet voices of the needs of our bodies and souls. The Świętokrzyskie Mountains were at one time a hotbed of pagan religious activity, and are rich in Slavic mythology and natural medicine. Herbal medicine and pure air are the perfect prescription for good health.

At the Łysica Wellness & SPA guest house, visitors can enjoy massages and body and facial care treatments, while Siedlisko Carownica Wellness & SPA offers sensuous SPA rituals for couples.

Agrotourism farms offer a rich variety of goods and services based on natural products, making them excellent places to enjoy the famous Świętokrzyskie honeys, cured meats, cheeses, wines and liqueurs.



Package
available from:



3-5-DAY PACKAGE

ŚWIĘTOKRZYSKI ADVENTURE



OFFER 1

DAY 1

In the heart of ancient mountains

9.00 Transport to Huta Szklana and then a hike along the educational trail to Święty Krzyż and the observation platform with a view of the gołoborze stone run. Then a look round the monastery of the Missionary Oblates of Mary Immaculate, the Shrine of the Relics of the True Cross, ascent up the church tower, and a visit to the crypt containing the mummified remains of Jeremi Wiśniowiecki, and finally descending down to Nowa Słupia along the Royal Road.

13.30 Lunch at Karczma Mnicha in Nowa Słupia or Gołoborze Children's Holiday Centre in Rudki.

14.30 Archaeological workshop: "Discover the ancient history of the Świętokrzyskie Mountains".

17.00 Check-in at the Gołoborze Children's Holiday Centre in Rudki.

19.00 Dinner and campfire - an evening of Świętokrzyskie legends.

Holy Cross



DAY 2

Around the Łysogóry range

9.00 Transport to Bodzentyn, then visiting the ruins of the Palace of Kraków Bishops in Bodzentyn, the historic Czernikiewicz family farm - now a branch of the Kielce Countryside Museum, transport to Święta Katarzyna, ascent to Łysica and then transport to Krajno Zagórze.

13.30 Lunch at the Magia Sabatu restaurant.

14.30 Visit to the Sabat Krajno Miniature Park and Entertainment Complex.

18.00 Return to Gołoborze Children's Holiday Centre in Rudki, and evening activities with the centre's instructors.

Święta Katarzyna





DAY 3

Magical Sandomierz

9.00 Transport to Sandomierz, then sightseeing: Opatowska Gate, the market square and town hall, cathedral, castle, cruise on the Vistula, Queen Jadwiga Gorge, Church of St. James and the "Needle's Eye" gate and stairway.

14.00 Lunch in Sandomierz.

15.00 Transport to Krzyżtopór Castle.

17.00 Return to Gołoborze Children's Holiday Centre.



DAY 4

On the Trail of World Heritage

9.00 Transport to Bałtów - Jurassic Park.

13.30 Lunch in Bałtów.

14.30 Transport to Krzemionki Opatowskie for a look around the complex of ancient mines which is entered on the UNESCO list of World Heritage sites.

17.30 Return to Gołoborze Children's Holiday Centre.



DAY 5

In the vicinity of the mountains

9.00 Transport to Kielce and then sightseeing: Kadzielnia geological reserve, the Palace of Kraków Bishops, cathedral, Museum of Toys and Play, and Karczówka landscape reserve.

14.00 Lunch in Kielce.

15.00 Transport to Chęciny and a look around the medieval castle ruins. Return home.

The programme can also be modified or a custom offer created.

Package partner:

Gołoborze Children's Holiday Centre in Rudki
ul. Górnicza 3, 26-006 Nowa Słupia, www.goloborze.pl

Target group size: organised groups of 20 people or more.

Seasonal availability: all year round.

Accommodation: Gołoborze Children's Holiday Centre in Rudki.

Getting there: calculated individually from any starting point within the country.

Contact:

Gołoborze Tourist Agency in Kielce,
ul. Beskidzka 14, 25-565 Kielce, tel. +48 507 803 986

e-mail: biuro@goloborzetravel.pl

www.goloborzetravel.pl

Package
available from:



2-DAY PACKAGE

THE MIDDLE AGES AS YOU'VE NEVER SEEN THEM BEFORE



OFFER 2

DAY 1



Medieval Settlement

Transport to Huta Szklana.

9.00 Walk up the educational trail in the Świętokrzyski National Park to Święty Krzyż, then a look around the Holy Cross sanctuary.

Sightseeing: monastery of the Missionary Oblates of Mary Immaculate, Shrine of the Relics of the True Cross in the lesser basilica, blessing with the relics of the Holy Cross in the Oleśnicki family chapel, Missionary Museum at Holy Cross, ascent up the church tower (52 metres high, nearly 200 steps), the crypt of Jeremi Wiśniowiecki, ascent to the gold-borze stone run, then descent in an electric vehicle from Holy Cross to Huta Szklana, a tasting of ancient beverages and a visit to the herbalist's storeroom at the Oaza Zdrowia complex in Huta Szklana.

13.30 Lunch at Karczma Izba Dobrego Smaku.

14.30 Visit to the Medieval Settlement in Huta Szklana and participation in two selected interactive workshops (weaving, pottery, herbalism, Medieval cookery, blacksmith's craft, saddle and shoe-making, manufacturing handmade paper and using sealing wax, Medieval dance lessons).

17.00 Transport to a primary school in Huta Stara for a meeting with the Rural Housewives' Circle, participation in paper-cutting / straw ornament-making workshops and a sweet treat.

19.00 Transport to Bieliny. Check-in and dinner at the Pod Kogutami guest house. Option to use the sauna, jacuzzi and salt grotto.



DAY 2

Arrival at Huta Stara.

9.00 Hiking along the educational “Świętokrzyski Fern Trail”. Dishes and liqueurs made from ancient plant-based recipes, workshops and tasting at the Oaza Zdrowia complex in Huta Szklana. Walk/transport to the inn in Huta Szklana.

13.30 Lunch at Karczma Izba Dobrego Smaku.

14.30 Transport to Napęków for a look around the family-owned apiary “Miody Napękowskie” and to participate in beekeeping workshops; honey-tasting.

17.00 Transport to Bieliny for a visit to the “Kowalczyk - Cured Meats from the Świętokrzyskie Mountains” factory; tasting of products.

18.30 Departure.

Target group size: organised groups of 20 people or more.

Seasonal availability: all year round.

Accommodation: Pod Kogutami guest house in Bieliny, www.podkogutami.pl

Getting there: calculated individually from any starting point within the country.

Contact: Centre for the Traditions, Tourism and Culture of the Świętokrzyskie Mountains in Bieliny, ul. Partyzantów 3, 26-004 Bieliny
tel. +48 41 26 08 151

e-mail: zamowienie@bieliny.pl



Package
available from:



3-DAY PACKAGE

WILLA CZAROWNICA JODŁOWY DWÓR

WITCHES' VILLA and FIR TREE MANOR



OFFER 3

DAY 1

15.00 Arrival at the Willa Czarownica (Witches' Villa) guest house in Nowa Słupia, at the foot of Łysa Góra.

16.00 Lunch/dinner with a surprise.

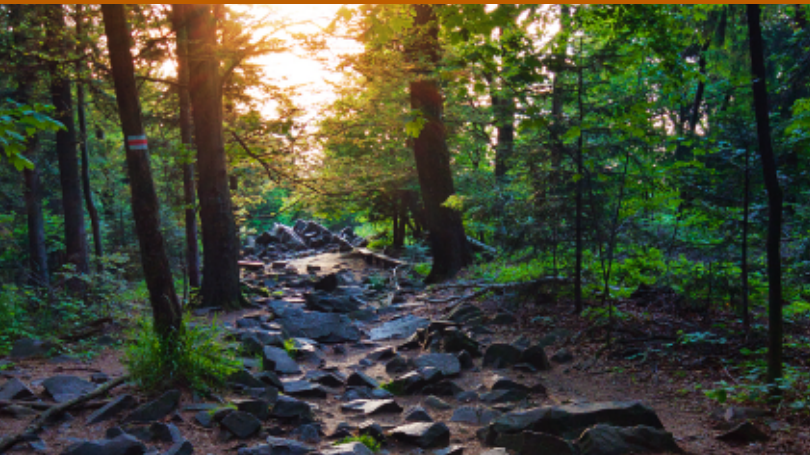
17.00 An evening of amazing tales, fun, history and Świętokrzyski legends.



Statue of St. Emeric the Pilgrim, Nowa Słupia



Goloborze



DAY 2

8.00 Morning exercises in a meadow near the Puszcza Jodłowa fir tree forest.

9.00 Breakfast.

10.00 "Along the monastery trail - discover the history of Holy Cross": a hiking trip along the history trail to Łysa Góra, visiting the Holy Cross monastery, viewing the surroundings from the observation tower and then ascent to the observation platform over the gołoborze stone run.

15.00 Lunch at Jodłowy Dwór (Fir Tree Manor).

16.00 Adventures at Babyjagowo - a land of fairytales and history.

17.30 Gingerbread-baking workshop using ancient recipes.

19.00 Return to the Willa Czarownica guest house for a campfire with music, song and sausages.



DAY 3

8.00 Morning exercises in a meadow near the Puszcza Jodłowa fir tree forest.

9.00 Breakfast.

10.00 Outing to the Museum of Ancient Świętokrzyski Metallurgy.

12.00 Check-out and departure from the complex.

Target group size: organised groups of 20 people or more.

Seasonal availability: all year round.

Accommodation: Willa Czarownica guest house in Nowa Słupia, Jodłowy Dwór in Huta Szklana.

Getting there: calculated individually from any starting point within the country.

Contact: Willa Czarownica, ul. Staszica 19b, 26-006 Nowa Słupia, www.willaczarownica.eu
Jodłowy Dwór Huta Szklana 34, 26-004 Bieliny, www.jodlowydwor.com.pl

Package
available from:



3-DAY PACKAGE

BETWEEN THE SACRED AND THE PROFANE



OFFER 4

DAY 1

12.00 Transfer from the station in Kielce to the guest house in Nowa Słupia.

14.00 Visiting Nowa Słupia: the 18th-century Church of St. Lawrence, the former Benedictine school known as Opatówka, the Cultural and Archaeological Centre, and the Museum of Ancient Metallurgy.

17.00 Lunch/dinner at the delightful Karczma Mnicha.



Cultural and Archaeological Centre, Nowa Słupia





DAY 2

9.00 Hiking trip along the history trail to Łysa Góra, visiting the monastery at Holy Cross, viewing the surroundings from the observation tower, ascent to the observation platform over the gołoborze stone run.

13.00 Descent along the educational trail from Łysa Góra to Trzcianka, visiting the Milanowska winery.

15.00 Return by bus to the guest house for lunch/dinner.



Holy Cross



DAY 3

10.00 Hiking trip from Nowa Słupia along a black trail to a protected stand of Polish larch, then hiking to Grzegorzowice and a visit to the 13th-century church.

13.00 Transport by bus to the Wiśniowe Wzgórze (Cherry Hill) educational farm and participation in the workshop: "In Świętokrzyskie it is well-known that work brings benefits of its own".

15.00 Lunch at the farm.

Target group size: organised groups of 20 people or more.

Seasonal availability: all year round.

Optional programmes: Holy Cross complex - visiting the post-Benedictine monastery complex, the Cultural and Archaeological Centre, and a reconstructed village of the prehistoric Przeworsk culture.

Accommodation: Świętokrzyski Manor, Willa Czarownica or U Jana guest houses, or agrotourism farms depending on group size.

Getting there: pick-up from a collection point within a 250 km radius.

Contact:

Łysa Góra Tourist Agency

ul. Rynek 15, 26-006 Nowa Słupia

tel. +48 41 361 80 57, +48 501 191 044

biuro@parklegend.pl; www.parklegend.pl

Package
available from:



3-DAY PACKAGE

ACTIVITY IN NATURE



OFFER 5

DAY 1



Siedlisko Carownica Wellness & SPA in the Świętokrzyskie Mountains, on the outskirts of the National Park, offers sports courts for team games, a 24-metre zip line, laser paintball, a swimming pool, trampoline, tepee-style tents and witches' cottages. An additional attraction is the Galanty Łogródecek Wellness Centre with a salt hut, Russian bania-style sauna, and hot and cold barrels. Families with children are welcome, as are organised school groups.

Accommodation: glamping cottages with sauna and fireplace - at Siedlisko Carownica Wellness & SPA.

Food:

- Buffet breakfast with local products - at Siedlisko Carownica Wellness & SPA,
- Regional lunch - at Karczma Izba Dobrego Smaku in Huta Szklana, Karczma Mnicha in Nowa Słupia or Siedlisko Carownica Wellness & SPA,
- Świętokrzyskie Mountains basket containing wine, juices, cheeses, cured meats and herbs.

14.00 Arrival at Siedlisko Carownica Wellness & Spa and lunch with a view of the Świętokrzyskie Mountains.

15.00 Learn to fly on a witch's broomstick and other attractions in the complex.

17.00 Laser paintball - outdoor game in the vicinity of the complex.

19.00 Socialising around the campfire.



Siedlisko Carownica



DAY 2

10.00 Cycling trip (with own or rented bikes) along nearby Świętokrzyski trails.

Optional attractions along the way: the wonder-filled play area at Babyjagowo, the Medieval Settlement, the monastery on Święty Krzyż mountain with observation tower, the Natural History Museum of the Świętokrzyski National Park, the Museum of Ancient Świętokrzyski Metallurgy in Nowa Słupia or Robber's Cave (Jaskinia Zbójcka) in Łagów.

13.00 Tasty stop at the Tradycja ice-cream parlour in Nowa Słupia.

14.00 "In the Kingdom of Bees" workshop at the Pszczółka educational apiary in Nowa Słupia.

17.00 Return to Siedlisko Carownica and use of the Wellness Zone.



DAY 3

10.00 Visit to the Museum of Minerals and Fossils in Święta Katarzyna.

11.00 Exploring the outdoors, and ascent up Łysica, one of the peaks in the Crown of Polish Mountains.

14.00 Lunch at the Jodełka Recreational Centre in Święta Katarzyna.

15.00 Relaxing at the Sabat Krajno Miniature Park and Entertainment Complex.

Target group size: individual tourists and organised groups.

Seasonal availability: all year round.

Accommodation: wooden cottages and glamping tents at Siedlisko Carownica Wellness & SPA.

Getting there: own transport.

Contact: Siedlisko Carownica Wellness & SPA,
Lechów 137 A, 26-004 Bieliny,
tel. +48 508 911 508,

repcja@carownica.pl, www.carownica.pl

Package
available from:



3-DAY PACKAGE

AN ACTIVE WEEKEND IN THE ŚWIĘTOKRZYSKIE MOUNTAINS



OFFER 6

DAY 1

15.00 Arrival and walk around the immediate vicinity: Nowa Słupia - Church of St. Lawrence, the Museum of Ancient Świętokrzyski Metallurgy and the Cultural and Archaeological Centre.

17.00 Traditional lunch/dinner by request. Evening for socialising.



Cultural and Archaeological Centre, Nowa Słupia



DAY 2

9.00 Traditional or buffet breakfast, and a packed lunch for the trail.

10.00 Transport by electric vehicle (called a melex) or bus to Święta Katarzyna. Hiking along the red trail, approximately 25 km. Ascent to the summit of Łysica, the highest peak of the Świętokrzyskie Mountains, then hiking to Święty Krzyż. Visit to the sanctuary and descent to the guest house.

18.00 Dinner.



DAY 3

9.00 Ascent to Szczytniak - the highest point in the Jeleński range - and then descent to Nowa Słupia. Along the trail there is a Romanesque rotunda-shaped church in Grzegorzowice.

16.00 Return to the guest house for lunch/dinner.

Target group size: individual tourists and organised groups of up to 17 people. It is possible to increase the group size by using the accommodation services of neighbouring facilities, or the package can also be customised to meet the needs and expectations of the group.

Seasonal availability: all year round.

Accommodation: Agro-Dom Agrotourism Farm, Wólka Milanowska 5a, 26-006 Nowa Słupia.

Getting there: own transport.

Contact: Agro-Dom Agrotourism Farm
Wólka Milanowska 5a, 26-006 Nowa Słupia
tel. +48 41 31 77 461, +48 796 115 414

email: mlefek@wp.pl

Packages
available from:



1-DAY PACKAGES

AROUND THE WORLD IN A DAY AT SABAT KRAJNO MINIATURE PARK AND ENTERTAINMENT COMPLEX

OFFER 7

9.00 Arrival at the park, visiting the “Wonderful World” Avenue of Miniatures, which includes St. Peter's Basilica, the Leaning Tower of Pisa, the World Trade Center towers, Mt. Rushmore, Cologne Cathedral and Mt. Etna.

13.30 Lunch at the Magia Sabatu restaurant.

14.30 The largest rope park in this part of Poland suspended on poles - with 5 different routes to choose from.

Optional:

The fun park at the Sabat Krajno Miniature Park and Entertainment Complex, with the following attractions: a huge inflatable fun zone, space station, bumper cars, zorbing, Eurobungee, 6D cinema, and many more.

Contact: Sabat Krajno Miniature Park and Entertainment Complex, Krajno Zagórze 43C, 26-008 Górnó

www.sabatkrajno.pl

KIDS' VACATION - HOLIDAY PACKAGES FOR THE YOUNGEST

OFFER 8



Gołoborze Children's Holiday Centre in Rudki provides a variety of forms of education and recreation as well as the qualified care of a professional staff and experienced outdoor guides. The programme was developed by the organisation itself and includes such options as “Mountains of History” and “Getting Active in the Świętokrzyskie Mountains”. Activities take the form of workshops, trips, competitions, games and play. The Holiday Centre features an outdoor sports pitch complex, a full-size indoor sports hall, a dance studio, a fitness room, a covered BBQ area, an outdoor firepit and an indoor swimming pool.

Discover the Świętokrzyskie Mountains with us!

We can prepare an individual offer for you.

Gołoborze Children's Holiday Centre in Rudki

tel./fax: +48 41 31 77 483 (reception), +48 507 803 986

email: goloborze@wp.pl; www.goloborze.pl



Package
available from:



3-DAY PACKAGE

THE MAGICAL POWER OF NATURE



OFFER 9

DAY 1

Siedlisko Carownica Wellness & SPA invites you to stay in the Świętokrzyskie Mountains, and guarantees that you will feel completely revitalised in the great outdoors. At Carownica, guests can experience the magic of the Świętokrzyskie Mountains, enjoy delicious local products and use the services of the Wellness & SPA complex.

Accommodation: cottages with sauna and fireplace at Siedlisko Carownica Wellness & SPA.

Food:

- Buffet breakfast with local products - at Carownica Wellness & SPA,
- Regional lunch - at Karczma Izba Dobrego Smaku in Huta Szklana, Karczma Mnicha in Nowa Słupia or Siedlisko Carownica Wellness & SPA.

When you return home, you'll take with you many beautiful memories as well as the natural flavours of the region in the form of a complementary Świętokrzyskie Mountains basket containing wine, juices, cheeses, cured meats and herbs.

16.00 Arrival at Carownica Wellness & Spa and lunch/dinner with a view of the Świętokrzyskie Mountains.

20.00 Exclusive use of the Wellness Zone (Russian banya-style sauna, hot and cold barrels), and start of a 3-day treatment in the salt hut.



Siedlisko Carownica



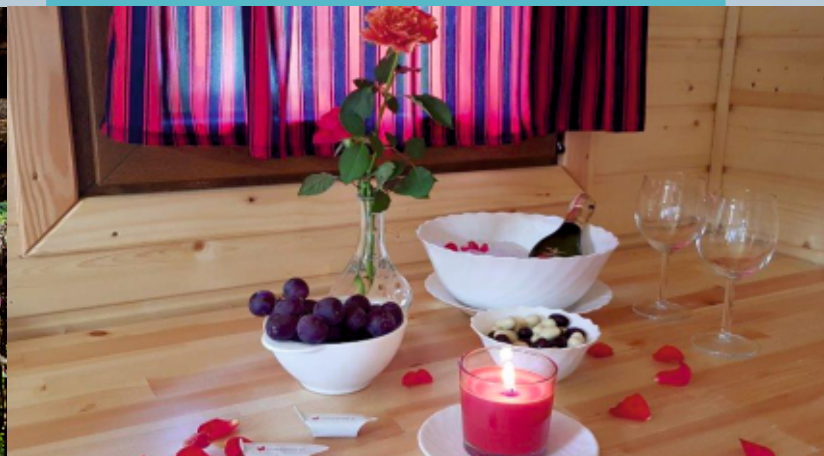
DAY 2

10.00 Hiking or cycling trip to Święty Krzyż along a picturesque trail via Trzcianka; then visiting the monastery of the Missionary Oblates of Mary Immaculate, the Natural History Museum of Świętokrzyski National Park and looking at the gołoborze stone run from the observation platform.

14.00 Visit to the herbalist's storeroom at the Oaza Zdrowia natural health complex at the foot of Łysa Góra in Huta Szklana.

15.00 Visit to the Medieval Settlement in Huta Szklana.

19.00 Return to Siedlisko Carownica Wellness & SPA and continuation of the health treatment in the salt hut, with a SPA for Couples - a Salve in Terra ritual with essential oils and kaolin clay.



DAY 3

9.00 Treatment in the salt hut.

12.00 Visits to the Milanowska Winery with tasting, the Smaki Ogrodu Juice Processing Plant in Bieliny and the Artisan Cheese Manufactory in Podłazy.

Target group size: individual tourists and organised groups.

Seasonal availability: all year round.

Accommodation: wooden cottages and glamping tents at Siedlisko Carownica Wellness & SPA.

Getting there: own transport.

Contact:

Siedlisko Carownica Wellness & SPA

Lechów 137 A, 26-004 Bieliny

tel. +48 508 911 508

recepja@carownica.pl

www.carownica.pl

Package
available from:



2-DAY PACKAGE

RELAXATION FOR TWO



OFFER 10

DAY 1

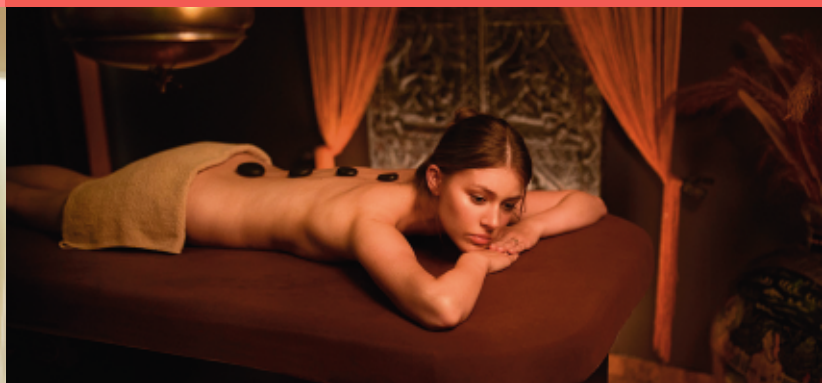


15.00 Arrival at the guest house + complimentary bottle of wine.

17.00 Relaxation massage conducted in an atmospheric space.

20.00 Romantic candlelit dinner.

DAY 2



8.00 Breakfast.

9.00 Unlimited access to the SPA (swimming pool, salt grotto, salt sauna, Finnish sauna).

Lengthy stays can also be organised.

Optional programmes: various types of events, training sessions.

Target group size: up to 32 people.

Seasonal availability: all year round.

Getting there: own transport.

Accommodation: Łysica Guest House ****
Wellness & SPA

Święta Katarzyna, ul. Kielecka 23a, 26-010 Bodzentyn
tel. +48 41 311 20 62, +48 512 55 30 33
e-mail: rezerwacje@pensjonatlysica.pl

PRACTICAL INFORMATION

Worth seeing:

- **Sanctuary of the Relics of the True Cross - Święty Krzyż**, www.swietykrzyz.pl
- **Museum of Ancient Świętokrzyski Metallurgy**, www.dymarki.pl
- **Museum of Minerals and Fossils in Święta Katarzyna**
ul. Kielecka 20, 26-010 Św. Katarzyna, tel. +48 41 311 21 16
www.swkatarzyna-muzeum.pl
- **Cultural and Archaeological Centre**, www.dymarki.pl
- **Medieval Settlement**, www.osadasredniowieczna.eu
- **Ruins of the Kraków Bishops Palace**, www.bodzentyn.pl
- **Convent of the Bernardine Sisters**, www.bodzentyn.pl
- **Museum of Minerals and Fossils**, www.swkatarzyna-muzeum.pl
- **Glass House in Ciekoty**, www.szklanydom.maslow.pl
- **Historic Czernikiewicz family farm in Bodzentyn**, www.bodzentyn.pl
- **Babyjagowo play area**, www.babyjagowo.pl
- **Świętokrzyski National Park**, www.swietokrzyskipn.org.pl
- **Sabat Krajno Miniature Park and Entertainment Complex**, www.sabatkrajno.pl
- **Jeleniowski Landscape Park**, www.pk.kielce.pl
- **Dymarki Świętokrzyskie Archaeological Festival**, www.dymarki.pl

Accommodation:

- **Gołoborze Children's Holiday Centre in Rudki**,
tel. +48 41/3177 483, ul. Górnicza 3, 26-006 Nowa Słupia
www.goloborze.pl
- **Jodłowy Dwór in Huta Szklana**, tel. +48 41 302 50 28,
Huta Szklana 34, 26-004 Bieliny, www.jodlowydwor.com.pl
- **Willa Czarownica in Nowa Słupia**, tel. +48 41 302 50 28,
ul. Staszica 19B, 26-006 Nowa Słupia, www.willaczarownica.eu
- **Siedlisko Carownica Wellness & SPA**, tel. +48 508 911 508,
Lechów 137 A, 26-004 Lechów, www.carownica.pl
- **Świętokrzyski Manor**, tel. +48 41 317 76 64, Milanowska Wólka 64,
26-006 Milanowska Wólka, www.swietokrzyskidwor.pl
- **Agro-Dom**, tel. +48 41 317 74 61, Milanowska Wólka 5A,
26-006 Milanowska Wólka, www.agroidom.pl
- **Agrotourism farm**, www.agrolysogory.pl
- **Jodelka Recreational Centre**, tel. +48 607 215 452,
Kielecka 3, 26-010 Święta Katarzyna
- **Łysica Guest House Wellness & Spa**, tel. +48 41 311 20 62,
Kielecka 23a, 26-010 Święta Katarzyna
- **Baba-Jaga Inn**, tel. +48 41 311 22 26, Kielecka 18,
26-010 Święta Katarzyna
- **Educational Centre in Milanowska Wólka**, tel. +48 41 317 70 64,
Milanowska Wólka 18a, 26-006 Nowa Słupia, www.centrum.scdn.pl
- **Ameliówka Hotel**, tel. +48 41 311 07 97 and 99,
ul. Bohdana Kosińskiego 2, 26-001 Masłów, www.ameliowka.pl

- **Przedwiośnie Hotel ** Samrelaks Mąchocice**
tel. +48 41 311 17 92 to 94, Mąchocice Kapitulne 178, 26-001 Masłów,
www.hotelprzedwiosnie.pl
- **Marysieńka Guest House**, tel. +48 608 440 578, Kielecka 24,
26-010 Święta Katarzyna
- **Koziołek Hotel**, tel. +48 41 311 51 10, Suchedniowska 19,
26-010 Bodzentyn
- **Pod Pielgrzymem Students' Youth Hostel** in Nowa Słupia,
tel. +48 798 607 975, Świętokrzyska 61, 26-006 Nowa Słupia

Recommended restaurants:

- **Karczma Mnicha in Nowa Słupia**, tel. +48 502 656 904
ul. Świętokrzyska 63, 26-006 Nowa Słupia, www.karczmannicha.pl
- **Gołoborze Children's Holiday Centre in Rudki**,
tel. +48 41 3177 483, ul. Górnicza 3, 26-006 Nowa Słupia,
www.goloborze.pl
- **Jodłowy Dwór complex in Huta Szklana**, tel. +48 41 302 50 28,
Huta Szklana 34, 26-004 Bieliny, www.jodlowydwor.com.pl
- **Willa Czarownica in Nowa Słupia**, tel. +48 41 302 50 28,
ul. Staszica 19B, 26-006 Nowa Słupia, www.willaczarownica.eu
- **Siedlisko Carownica Wellness & SPA**, tel. +48 508 911 508,
Lechów 137 A, 26-004 Lechów, www.carownica.pl
- **Świętokrzyski Manor**, tel. +48 41 317 76 64,
Milanowska Wólka 64, 26-006 Milanowska Wólka,
www.swietokrzyskidwor.pl
- **Karczma Izba Dobrego Smaku** in Huta Szklana,
tel. +48 41 260 81 56, Huta Szklana 37, 26-004 Bieliny,
www.osadasredniowieczna.eu

Tourist Information Offices in the Świętokrzyskie Mountains:

- **Bieliny**, ul. Partyzantów 3, tel. +48 41 26 08 152, it@bieliny.pl
During the tourist season, from the beginning of May to October, a Tourist Information Office operates in Huta Szklana at the ticket window for the Medieval Settlement, daily from 10.00 - 18.00
- **Bodzentyn**, ul. Rynek Górny 11, tel. +48 693 690 333,
pit-bodzentyn@wp.pl
- **Nowa Słupia**, ul. Świętokrzyska 18, tel. +48 517 349 983,
gok@dymarki.pl

“Partnership for the Land of the Holy Cross” Local Tourism Organisation, Rudki ul. Górnicza 3,
26-006 Nowa Słupia, tel. +48 507 803 986

ziemiaswietegokrzyza@wp.pl; www.ziemiaswietegokrzyza.pl
fb/ziemiaswietegokrzyza; instagram.com/ziemiaswietegokrzyza

Packages
available from:



Golebórze Tourist Agency
ul. Beskidzka 14, 25-001 Kielce
tel. +48 507 803 986
www.goleborzetravel.pl

ABEX Tourist Agency
ul. Sienkiewicza 10/12 A, 25-333 Kielce
tel. +48 535 98 43 43, +48 607 29 36 80
www.abexkielce.com.pl

Łysa Góra Tourist Agency
ul. Rynek 15, 26-006 Nowa Słupia
tel. +48 41 361 80 57
www.parklegend.pl

Coordinator: Katarzyna Batko
Layout and design: K8-Group Sp. z o.o.
e-mail: 8kgroup@gmail.com

Translation: Translation Street, Rydlówka 20,
30-363 Kraków, tel. +48 12 362 60 00,
e-mail: biuro@translationstreet.pl

Publisher:
Świętokrzyskie Voivodeship
Regional Tourism Organisation (ROT WŚ)
ul. Sciegienego 2/32, 25-033 Kielce
tel. +48 41 361 80 57
rot@swietokrzyskie.travel
www.rot.swietokrzyskie.travel

Photos:
K. Gitzman, M. Maciążek, K. Pęczalski, S. Rakowski,
P. Sepiolo, G. Szczęsny, A. Śmiałek, J. Tatarkiewicz,
ROT WŚ archive.
Editing and proofreading:
A. Kukielka - Bocheńska

Text:
P. Sepiolo



Ministerstwo
Sportu i Turystyki

